

# **International Medical Equipment Collaborative (IMEC)**

## **Sustainable and Successful Capacity Building**

**PQMD  
Board Meeting  
October 2017**



**250 million available occasions of service**

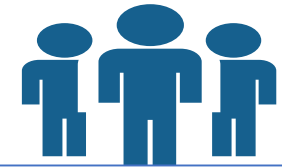
**20 year history of success established in 1995**



**unparalleled workshop & distribution Center**



**501(c)3**



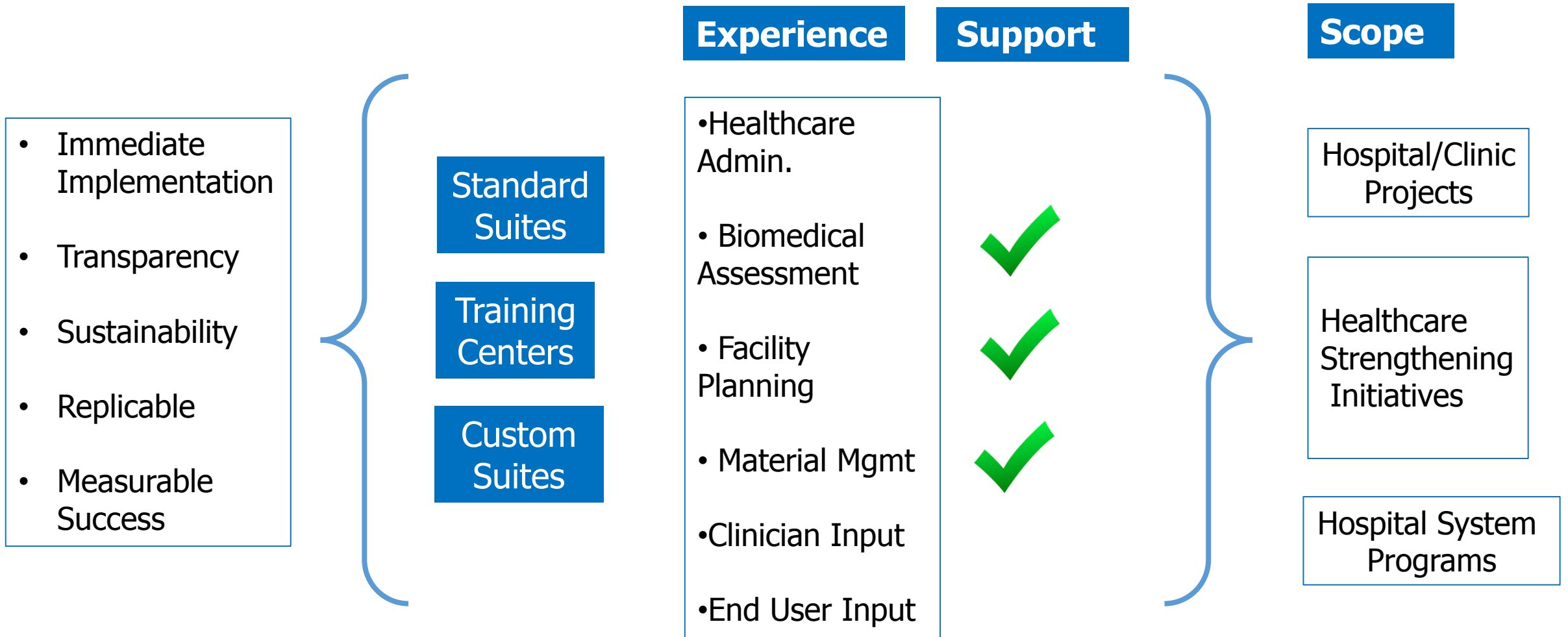
**more than 90 countries**

**collaboration with hospital staff**

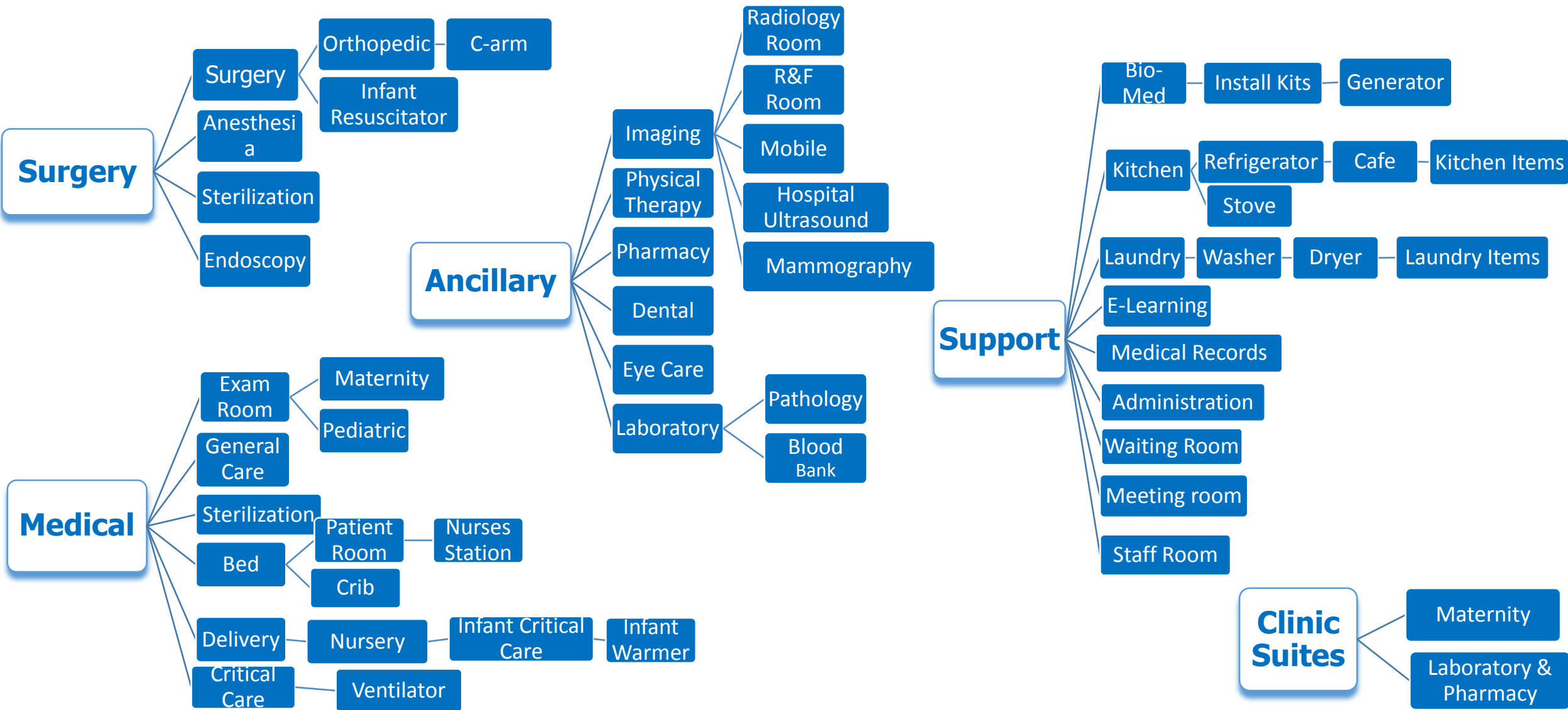


**98% of revenue directly supports projects**

# IMEC Capacity Building

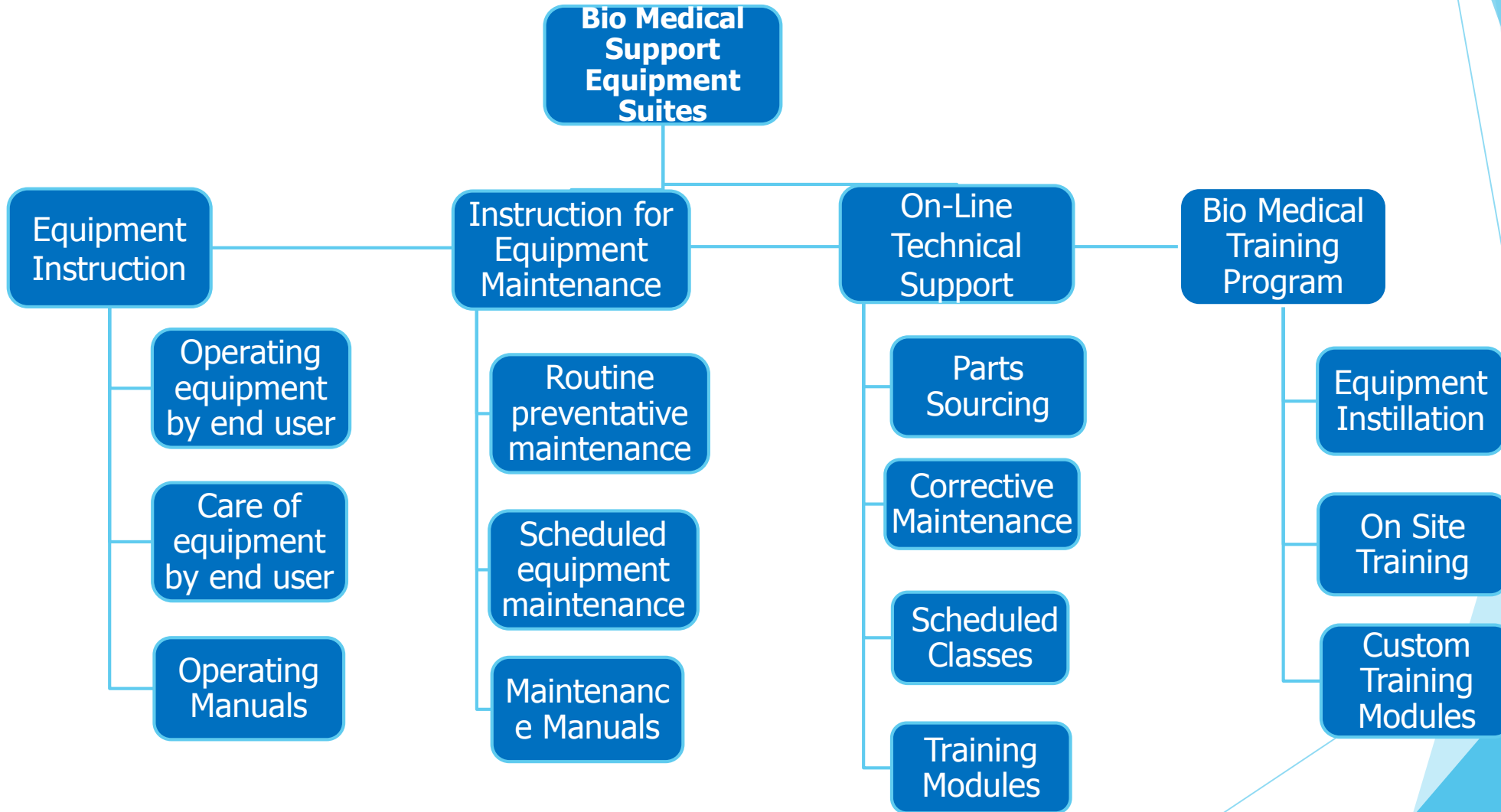


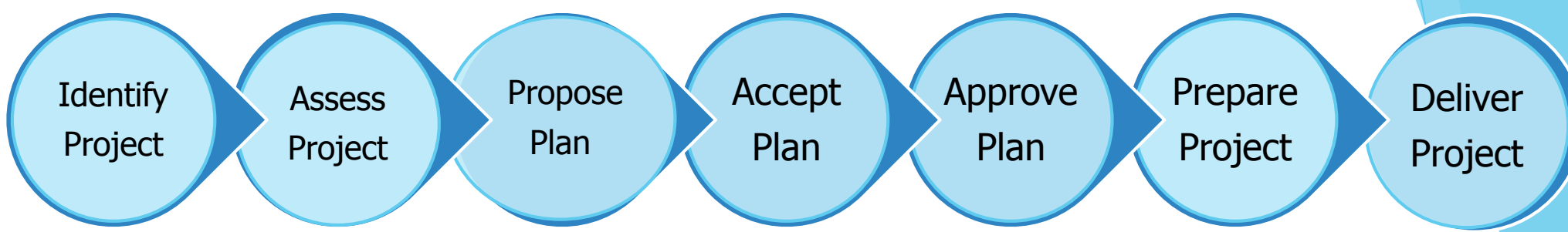
# IMEC Suite Tree



All Suites include appropriate Medical Supplies and Instruments

# IMEC **Continuous Support**





### 1) Partner Identification

- a) Established organization
- b) Ability to clear customs
- c) Relationship with hospital/clinics
- d) Funding source

### 2) Assessment

- a) Assign project coordinator
- b) Review IMEC's process
- c) Assessment completed
- d) Scope of project defined

### 3) Proposed Equipment Plan

- a) IMEC suites
- b) added services
- c) Contribution requested

### 4) Acceptance

- a) Equipment plan reviewed
- b) Changes to plan
- c) Equipment plan **accepted**

### 5) Approval

- a) Suite detail
- b) Contribution
- c) Shipping information

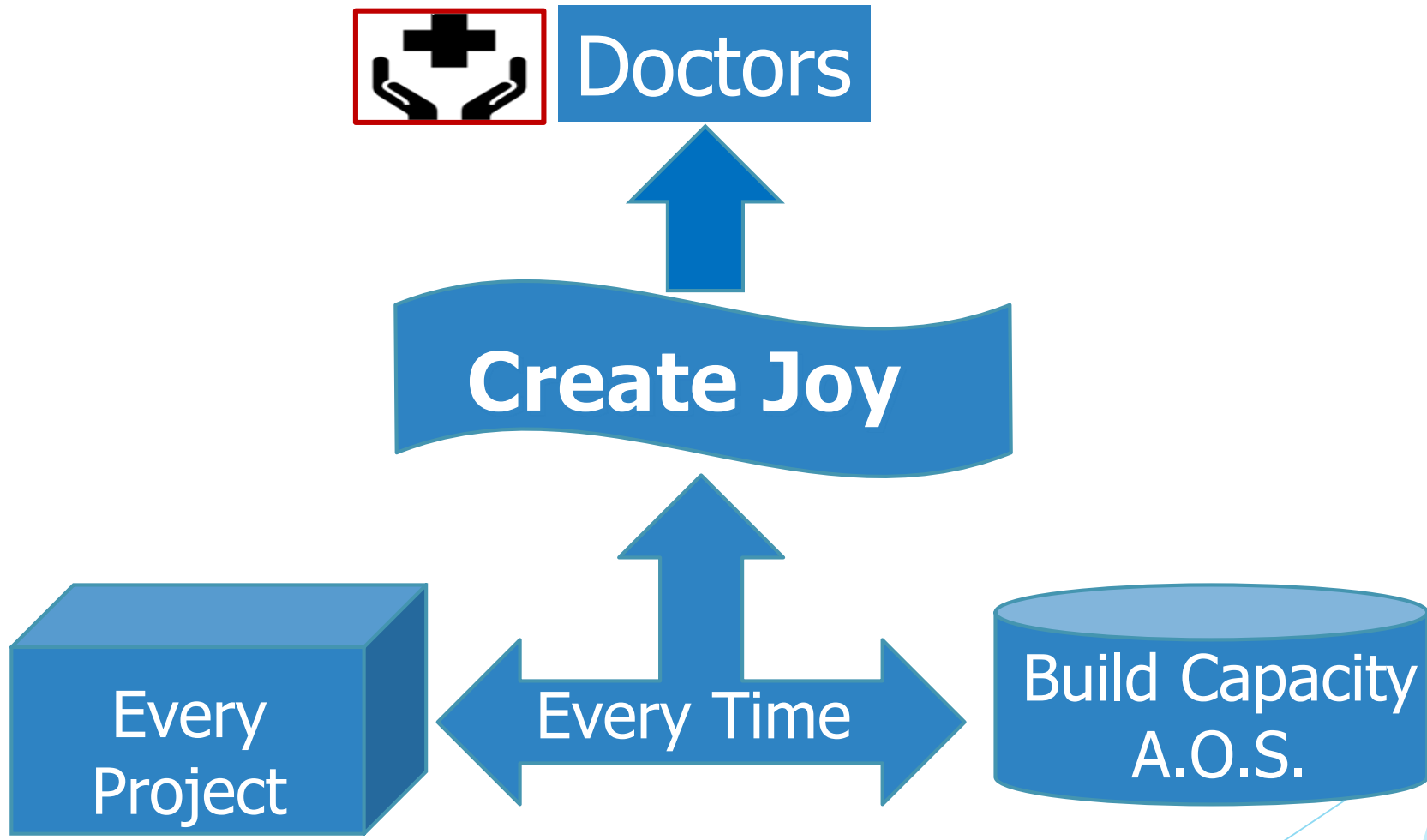
### 6) Preparation

- a) IMEC suites prepared
- b) Coordinate added services

### 7) Shipping/Delivery

- a) Arrange door to door shipping
- b) Customs documentation /clearing
- c) Installation\_and on-line support

# IMEC Our Mission





## Transforms Critical Care Nursery Suite



## Significant Reduction Infant Deaths





**Before: Exam Table in  
Disrepair**

**...after: IMEC Clinical  
Exam Suite**

**Immediate Outpatient and  
Clinic Services For  
Thousands of Patients**





**Before: Minor Surgical  
Procedure Room**

**...after: IMEC Surgical  
and Anesthesia Suite**

**Exponentially  
Expands Capacity of  
Surgical Services**

