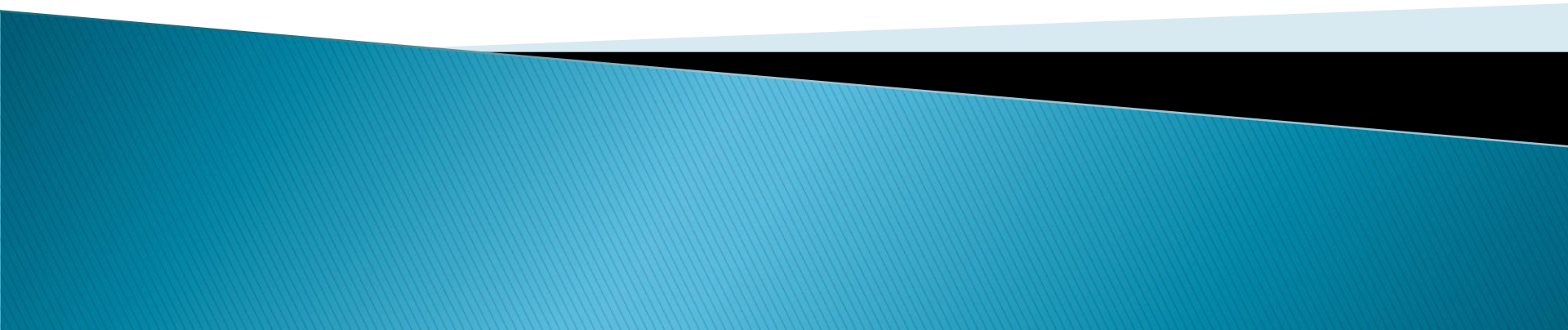


**Exploring Innovative and Sustainable
Approaches to Improve Community
Resilience in Disaster Prevention and
Response**

**August 29–30, 2008
Davos, Switzerland**



Presentation Overview

- ▶ PQMD – Cross Sector Collaboration
- ▶ Disaster Resilient Communities
 - Ongoing Member Activities
 - PQMD Emergency Committee
 - PQMD Mapping Project
- ▶ Challenge

Health Companies

Abbott Laboratories Fund
Baxter
BD
Boehringer Ingelheim Cares Foundation
Bristol–Myers Squibb Co.
Eli Lilly and Company
Genzyme
GlaxoSmithKline
Hospira, Inc.
Johnson & Johnson
Merck & Co., Inc.
Pfizer, Inc.
sanofi–aventis US
Schering–Plough Corporation
Wyeth Pharmaceuticals

Humanitarian NGOs

AmeriCares
Catholic Medical Mission Board
Direct Relief International
Heart to Heart International
International Aid, Inc.
Map International
Mercy Ships
National Cancer Coalition
Medical Teams International
Project HOPE
U.S. Fund for UNICEF
World Vision

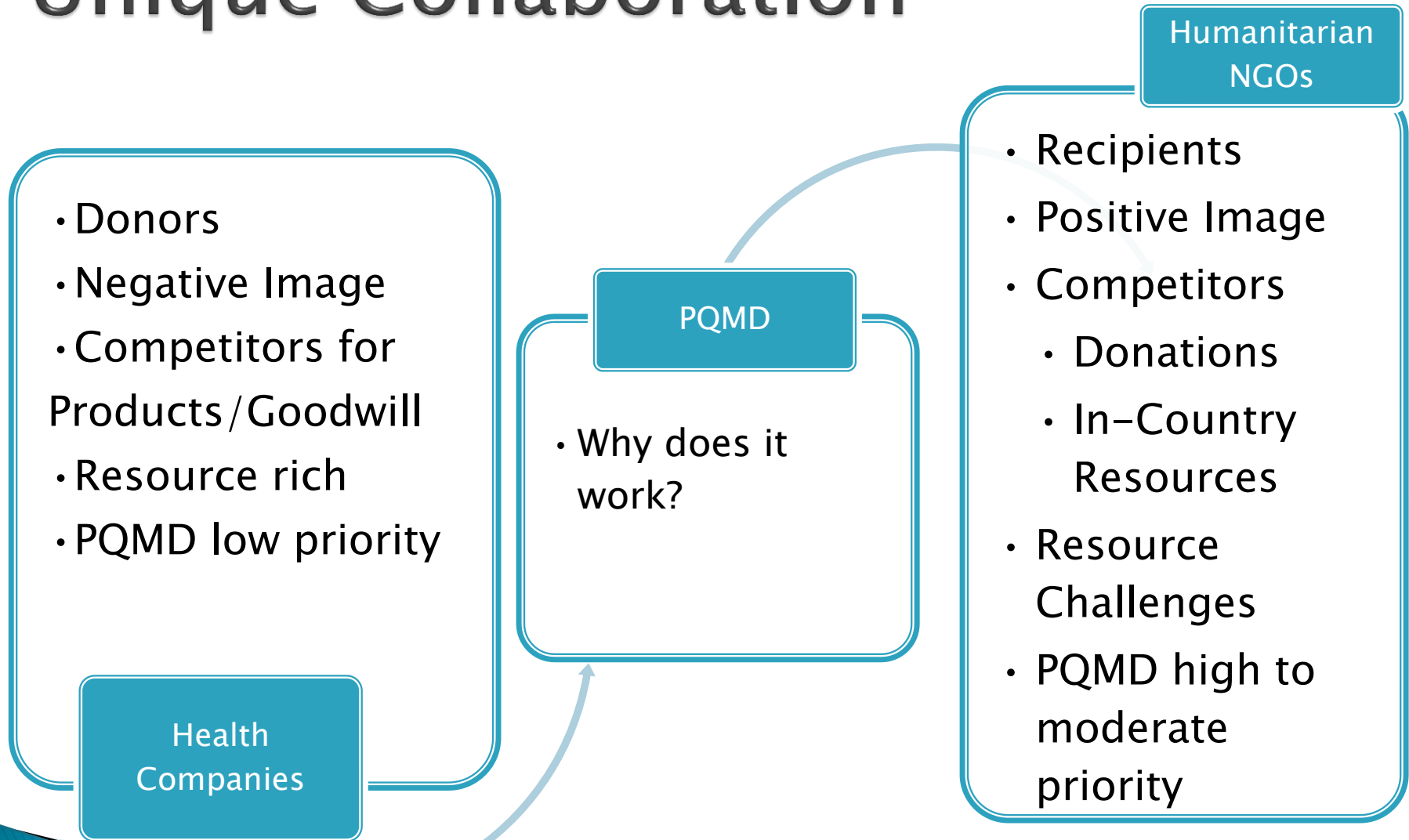
PQMD Ongoing Objectives

- Develop and promote sound donation practices
- Represent members' interests before national and international agencies
- Encourage documentation and scholarly study of health and socioeconomic impacts of the donation of health care products
- Educate audiences on member projects and programs that serve to encourage replication of appropriate donation practices

PQMD 2008–10 Strategic Objectives

- Accreditation/Standards
- Mapping
- Metrics
- Education
- Membership
- Policy Environment

Unique Collaboration



Wilder Collaboration Factors

Online questionnaire for assessing the factors that influence the success of collaboration.

- ✓ History of collaboration or cooperation in the community
- ✓ Collaborative group seen as a legitimate leader
- ✓ Favorable political and social climate
- ✓ Mutual respect, understanding, and trust
- ✓ Appropriate cross section of members
- ✓ Members see collaboration as in their self-interest
- ✓ Ability to compromise
- ✓ Members share a stake in both process and outcome

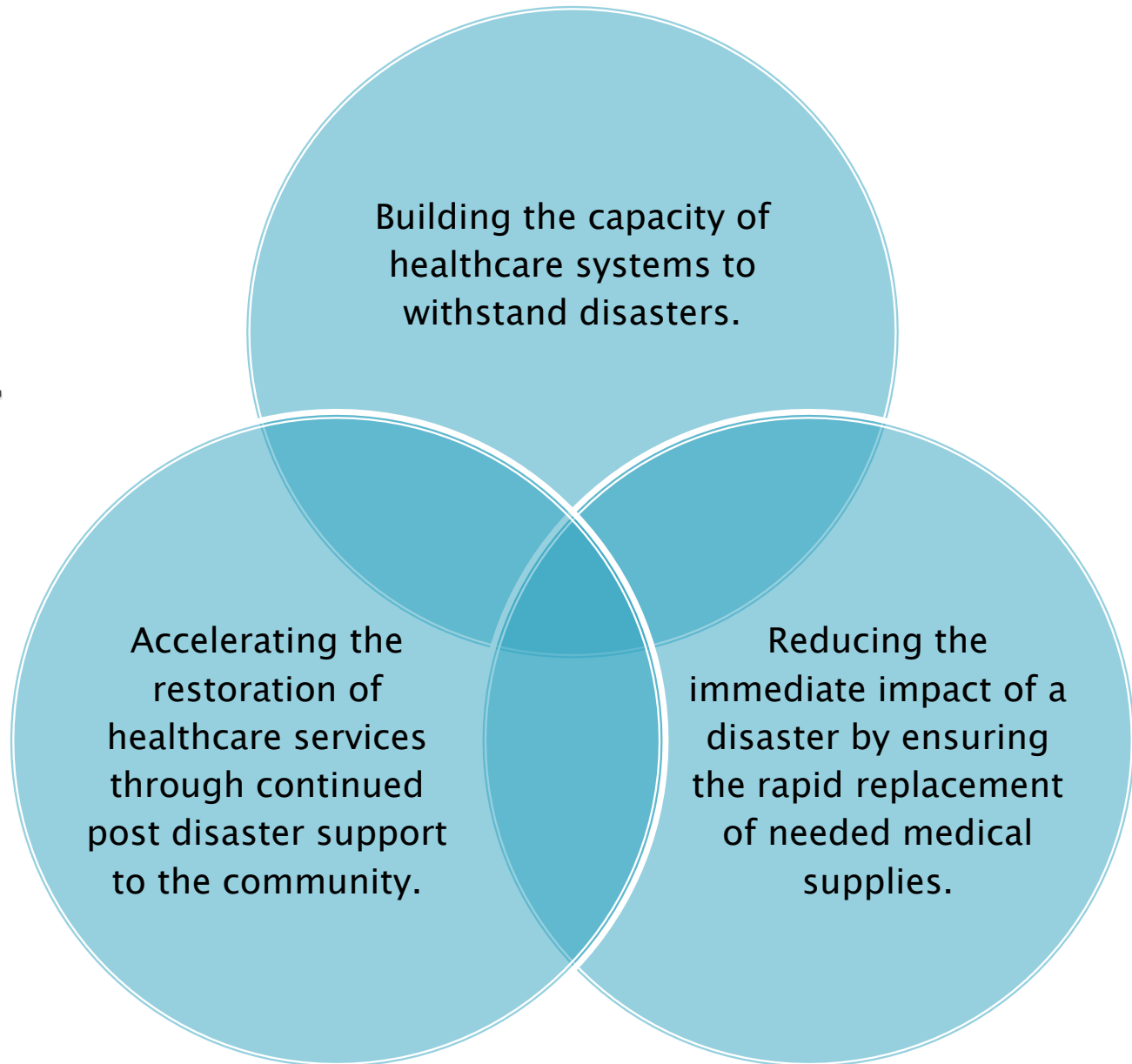
© Amherst H. Wilder Foundation.

Wilder Collaboration Factors

- ✓ Multiple layers of decision-making
- ✓ Flexibility
- ✓ Development of clear roles and policy guidelines
- ✓ Adaptability
- ✓ Appropriate pace of development
- ✓ Open and frequent communication
- ✓ Established informal relationships and communications links
- ✓ Concrete, attainable goals and objectives
- ✓ Shared vision
- ✓ Unique purpose
- ✓ Sufficient funds, staff, materials, and time
- ✓ Skilled leadership

© Amherst H. Wilder Foundation.

PQMD Member Activities & Disaster Resilience



PQMD

The Partnership for Quality Medical Donations

PQMD Mapping Project

In 2005, PQMD began working with the Loma Linda University Geoinformatics department of the School of Public Health to demonstrate how a Geographic Information System (GIS) can be used to capture and manage information through a combination of GPS mapping of health facilities and on-site collection of information.



2008 Goals

1. Combined PQMD Surveys
2. Online System
3. Communication Tool
4. Planning Tool
5. Member Management Tool
6. Public Resource

50 shipments with a total value of \$502,500 found.

Member Area

- Home
- Shipments
- Agencies
- Facilities
- In Country Partners
- Contacts
- Disasters
- Donation Map
- Surveys



Legend : Disease : Disaster : Development : Other : Facility

Member:

Country:

Year:

7 shipments with a total value of \$35,716,795 found.



Legend : Disease : Disaster : Development : Other : Facility



The Partnership
for Quality
Medical
Donations

Advancing Quality Medical Donations Worldwide

View Facility

Facility Name: Christian Aid Ministry (CAM)

Agency: International Aid

Code from national MOH:

Latitude: 14.08330100

Longitude: -87.22045900

Country: Honduras

URL: www.anabaptists.org

Facility Type: Health Center/Clinic, Pharmacy Pre-service

Site Focus: Health, Orphanage

Primary Services Offered: Child healthcare, Disaster relief site, General health screening, Health training general, Maternal and child health

Are these programs offered without gaps in service, year round?: Yes

Most desired prescribed drugs and over-the-counter drugs

Physical and Human Resources

Is facility equipped for scale training (50-100) people per session?: Yes

Metrics

[Edit](#)

[View CMS Nodes for this facility](#)

Member Area

- [Home](#)
- [Shipments](#)
- [Agencies](#)
- [Facilities](#)
- [In Country Partners](#)
- [Contacts](#)
- [Disasters](#)
- [Donation Map](#)
- [Surveys](#)
- [Logout](#)

Honduras

[Case Study Photos](#)

Country: Honduras

Member: AmeriCares

In Country Partner: Sovereign Military Order of Malta

Facility: Centro de salud Santiago

Facility Type: Health Clinic

Longitude = -68.1822

Latitude = -16.5372

2006 Honduras Donation Totals:

Medical Equipment: \$26,082.12

Medical Consumables: 177,992.91

Pharmaceuticals: \$27,301,381.52

Other: 130,329.64



Hospira and AmeriCares Help Survivors of Cyclone Nargis

Cyclone Nargis Situation Summary

On May 2, 2008 Cyclone Nargis struck the Irrawaddy Delta and south Yangon regions of Myanmar, bringing torrential rain and winds of up to 120 mph. As it stretched 25 miles inland, the storm surge ravaged 95% of homes in its path. In addition to an estimated 130,000 dead or missing, the devastating cyclone affected 2.4 million people in the delta. Survivors required immediate relief including food, water, shelter and health services.

The cyclone disproportionately affected impoverished rural communities. Its saltwater floods ruined large swaths of farmland in Myanmar's rice bowl, which will have long-term ramifications for food security, increasing the risk of malnutrition. Most rural health posts, which had served as the front lines of preventive and primary care for surrounding communities, were also destroyed by the storm. The scale of devastation wrought by Nargis rivals that of 2004's Southeast Asian tsunami in Indonesia.

AmeriCares Mobilizes Hospira Products for Response

AmeriCares prepared to help cyclone survivors immediately, drawing on its previous experience working under challenging government constraints in diplomatically isolated counties. The organization secured visas for two relief workers managing the response on the ground in Yangon, and one coordinator working in Bangkok.



IOM

Cyclone Nargis killed over 100,000 people and destroyed rural health posts in the delta.



PQMD Emergency Committee

Convenes a conference call 24 – 48 hours after a large scaled event.

Roll call report by members of to gather assessments, issues and requests.

Allows for a candid assessment of the situation.

Helps NGO's that do not have an in country presence determine what they may be asked to provide.

Helps company prepare their response – including a justification for waiting or not responded.

Private and public reports are developed.

View Disaster

Name: Cyclone Nargia

Date: 05/02/2008 00:00:00 MDT

Description: On May 2, 2008 Cyclone Nargis struck the Irrawaddy Delta and south Yangon regions of Myanmar, bringing torrential rain and winds of up to 120 mph. As it stretched 25 miles inland, the storm surge ravaged 95% of homes in its path. In addition to an estimated 130,000 dead or missing, the devastating cyclone affected 2.4 million people in the delta. Survivors required immediate relief including food, water, shelter and health services.

[View Member Responses](#)

www.pqmd.org | [Contact Us](#) | [Privacy Policy](#)

- Home
- Shipments
- Agencies
- Facilities
- In Country Partners
- Contacts
- Disasters
- Donation Map
- Surveys
- Logout

PQMDThe Partnership
for Quality
Medical
Donations

Advancing Quality Medical Donations Worldwide

Member Area

- Home
- Shipments
- Agencies
- Facilities
- In Country Partners
- Contacts
- Disasters
- Donation Map
- Surveys
- Logout

Member Responses to Cyclone Nargia**All Responses**

Agency	On the Call	Status	
AmeriCares	Yes	Is Responding	View
Agency B	No	Assessing	View
Agency A	No	Assessing	View
test agency	No	Assessing	View
Test Agency	No	Assessing	View
PQMD	No	Assessing	View
Visionlink	No	Assessing	View



The Partnership
for Quality
Medical
Donations

Advancing Quality Medical Donations Worldwide

View Member Response

Agency: AmeriCares

On the Call: Yes

Status: Is Responding

Summary: AmeriCares prepared to help cyclone survivors immediately, drawing on its previous experience working under constraints in diplomatically isolated counties. The organization secured visas for two relief workers managing the Yangon, and one coordinator working in Bangkok.

Member Area

- Home
- Shipments
- Agencies
- Facilities
- In Country Partners
- Contacts
- Disasters
- Donation Map
- Surveys
- Logout



The Partnership
for Quality
Medical
Donations

Member Area

- Home
- Shipments
- Agencies
- Facilities
- In Country Partners
- Contacts
- Disasters
- Donation Map
- Surveys
- Logout

Advancing Quality Medical Donations Worldwide

View Facility

Facility Name: Health Care Facility

Agency: Agency B

Code from national MOH:

Latitude: 23.43000000

Longitude: 90.26000000

Country: Bangladesh

Facility Type: Health Center/Clinic, Hospital, Pharmacy Pre-service

Site Focus: Drug Distribution, Health, HIV/AIDS counseling/testing, Vision Care

Primary Services Offered: Health training professional, Maternal health care

Single Disease or Focused Initiative: Fistula Repair, Malaria, Protein Energy Malnutrition

Are these programs offered without gaps in service, year round?: Yes

Most desired prescribed drugs and over-the-counter drugs

Physical and Human Resources

Number of medical officers: 5

Number of clinical officers: 3

Number of medical assistants: 2

Number of registered nurses: 2

Number of enrolled nurses: 2

Is facility equipped for scale training (50-100) people per session?: Yes

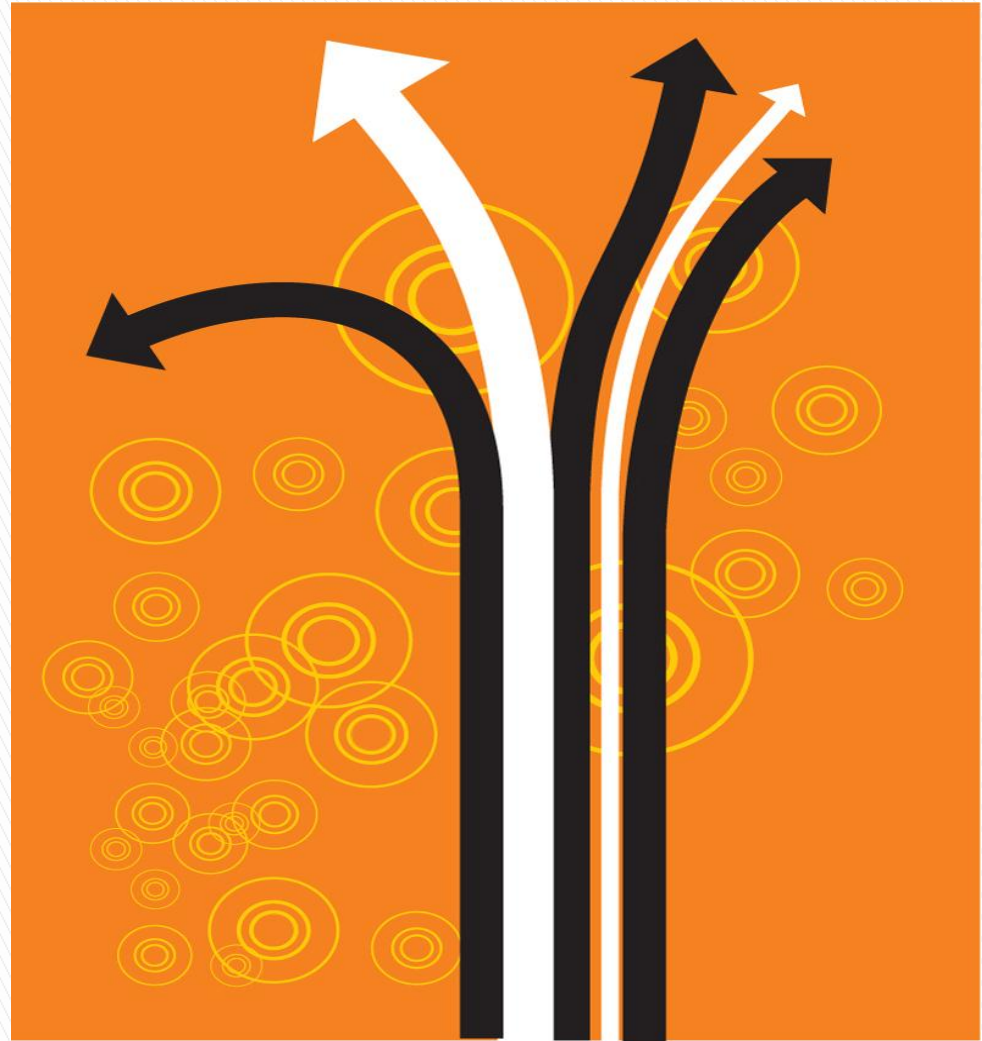
Metrics

[Edit](#)

[View CMS Nodes for this facility](#)

Challenge: Inclusion & Structure

- Accreditation/Standards
- Mapping
- Metrics
- Education
- Membership
- Policy Environment



Thank You !

References

Pharmaceutical donations by the USA: an assessment of relevance and time-to-expiry.

M.R. Reich, Department of Population and International Health, Harvard School of Public Health, Boston MA, USA, A.K. Wagner, The Health Institute, New England Medical Center, Boston MA, USA T.J. McLaughlin, Department of Ambulatory Care and Prevention, Harvard Medical School, and Harvard Pilgrim Health Care, Boston MA, USA. K.A. Bulletin of the World Health Organization, 1999, 77 (8) # World Health Organization 1999

Wilder Collaboration Factors Inventory – Amherst H. Wilder Foundation. Wilder Research
451 Lexington Parkway North, Saint Paul, Minnesota 55104